

# \$153,500 - 26 52111 Range Rd 270, Rural Parkland County

MLS® #E4407996

**\$153,500**

0 Bedroom, 0.00 Bathroom,  
Land Commercial on 0.00 Acres

Sandhills Estates, Rural Parkland County, AB

Exceptional Development Opportunity at Edmonton Parkland Executive Airport! This 0.16-acre lot in the Edmonton Parkland Executive Airport offers direct access to the nearby runway, making it an ideal location for aviation-related businesses. With paved taxiways, natural gas and power to the lot, this property is ready for the construction of hangars or shops tailored to your needs. Each lot will require an independent septic and cistern system. Zoned AGG, this versatile lot allows for a range of commercial or aviation development possibilities. Don't miss your chance to secure a prime spot in this growing executive airport community!

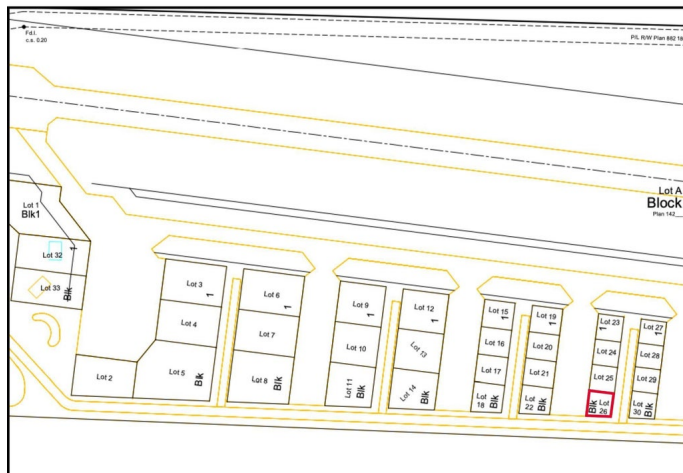


## Essential Information

|           |                 |
|-----------|-----------------|
| MLS® #    | E4407996        |
| Price     | \$153,500       |
| Bathrooms | 0.00            |
| Acres     | 0.00            |
| Type      | Land Commercial |
| Status    | Active          |

## Community Information

|         |                       |
|---------|-----------------------|
| Address | 26 52111 Range Rd 270 |
| Area    | Rural Parkland County |



|             |                       |
|-------------|-----------------------|
| Subdivision | Sandhills Estates     |
| City        | Rural Parkland County |
| County      | ALBERTA               |
| Province    | AB                    |
| Postal Code | T7X 3M2               |

### **Additional Information**

|                |                      |
|----------------|----------------------|
| Date Listed    | September 26th, 2024 |
| Days on Market | 190                  |
| Zoning         | Zone 90              |

DATA IS DEEMED RELIABLE BUT IS NOT GUARANTEED ACCURATE BY THE REALTORS® ASSOCIATION OF EDMONTON. COPYRIGHT 2025 BY THE REALTORS® ASSOCIATION OF EDMONTON. ALL RIGHTS RESERVED. Trademarks are owned or controlled by the Canadian Real Estate Association (CREA) and identify real estate professionals who are members of CREA (REALTOR®, REALTORS®) and/or the quality of services they provide (MLS®, Multiple Listing Service®)

Listing information last updated on April 4th, 2025 at 1:32am MDT