

Courtesy Of Hassan Hachem Of Initia Real Estate

\$120,000 - 202 8310 Jasper Avenue, Edmonton

MLS® #E4414598

\$120,000

2 Bedroom, 1.00 Bathroom, 789 sqft

Condo / Townhouse on 0.00 Acres

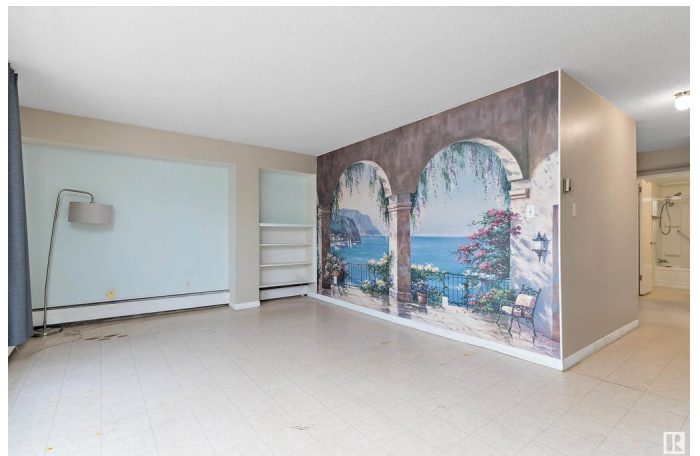
Cromdale, Edmonton, AB

Get ready to marvel at the breathtaking views of the River Valley - right from your balcony! This 2nd floor, 2-bedroom, 1-bathroom condo not only provides the unbeatable view of the riverfront, but also easy access to downtown and public transportation, making it an excellent choice for students and professionals. Perfectly situated in a prime location, this beautiful home allows you to enjoy the tranquility of nature while staying connected to the buzz of urban life. Nestled in a quiet and well maintained building, and with all utilities included in the condo fees, you'll experience both comfort and convenience in this ideal retreat. The functional and open layout of the home makes it feel spacious and move in ready. Don't miss the opportunity to own a home that combines style, location, and unbeatable views!

Built in 1968

Essential Information

MLS® #	E4414598
Price	\$120,000
Bedrooms	2
Bathrooms	1.00
Full Baths	1
Square Footage	789
Acres	0.00



Year Built	1968
Type	Condo / Townhouse
Sub-Type	Apartment High Rise
Style	Single Level Apartment
Status	Active

Community Information

Address	202 8310 Jasper Avenue
Area	Edmonton
Subdivision	Cromdale
City	Edmonton
County	ALBERTA
Province	AB
Postal Code	T5H 3S3

Amenities

Amenities	Parking-Plug-Ins, Storage-In-Suite
Parking	Stall

Interior

Appliances	Hood Fan, Refrigerator, Stove-Electric, Window Coverings
Heating	Hot Water, Natural Gas
# of Stories	6
Stories	1
Has Basement	Yes
Basement	None, No Basement

Exterior

Exterior	Concrete, Metal
Exterior Features	Golf Nearby, Public Transportation, River Valley View, River View, Shopping Nearby
Roof	Tar & Gravel
Construction	Concrete, Metal
Foundation	Concrete Perimeter

Additional Information

Date Listed	November 25th, 2024
Days on Market	137
Zoning	Zone 09

Condo Fee \$706

DATA IS DEEMED RELIABLE BUT IS NOT GUARANTEED ACCURATE BY THE REALTORS® ASSOCIATION OF EDMONTON. COPYRIGHT 2025 BY THE REALTORS® ASSOCIATION OF EDMONTON. ALL RIGHTS RESERVED. Trademarks are owned or controlled by the Canadian Real Estate Association (CREA) and identify real estate professionals who are members of CREA (REALTOR®, REALTORS®) and/or the quality of services they provide (MLS®, Multiple Listing Service®)

Listing information last updated on April 11th, 2025 at 5:32am MDT