

Courtesy Of Rossella Trulli Of Rimrock Real Estate

\$289,900 - 1401 9020 Jasper Avenue, Edmonton

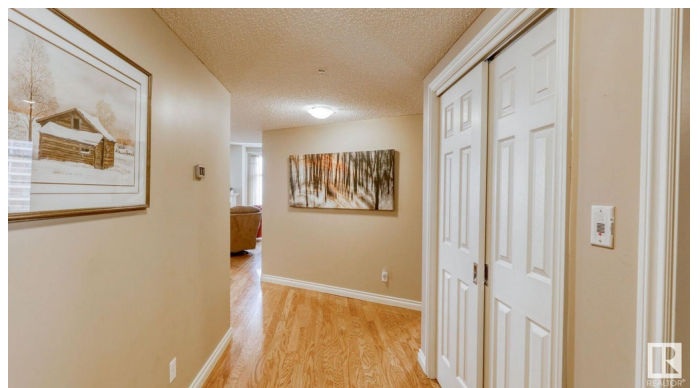
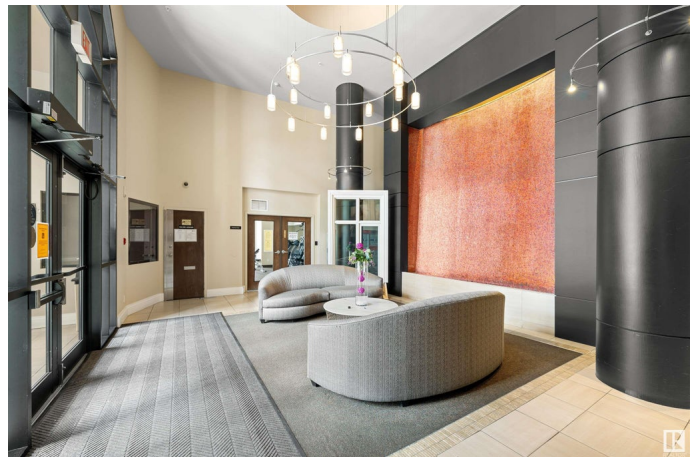
MLS® #E4416267

\$289,900

2 Bedroom, 2.00 Bathroom, 1,312 sqft
Condo / Townhouse on 0.00 Acres

Boyle Street, Edmonton, AB

OUTSTANDING VALUE FOR DOWNTOWN LUXURY! This 1300+sqft unit has it all! Come and live or invest in the beautiful, quiet and safe Jasper Properties - a luxury high rise overlooking Edmonton's stunning river valley. This private corner suite is tastefully finished and impeccably maintained. You are welcomed to an expansive living area open to the kitchen with long bar, perfect for entertaining. Just off the kitchen is a beautiful dining room that looks out to the patio with city views. The serene primary bedroom features a walk-in closet and 4pc ensuite. The second bedroom has two closets and a river valley view! This executive suite also features another spacious 3pc bathroom, large laundry room and large storage room/ potential den. Condo fees include ALL utilities for hassle free living, secure heated underground parking, and fitness facility. Brand new heat pump, stove and \$42K in new windows!. Close to Stadium, Galleries, Ice District and amenities. Come and own a piece of Edmonton's vibrant downtown!



Built in 2005

Essential Information

MLS® #	E4416267
Price	\$289,900

Bedrooms	2
Bathrooms	2.00
Full Baths	2
Square Footage	1,312
Acres	0.00
Year Built	2005
Type	Condo / Townhouse
Sub-Type	Apartment High Rise
Style	Single Level Apartment
Status	Active

Community Information

Address	1401 9020 Jasper Avenue
Area	Edmonton
Subdivision	Boyle Street
City	Edmonton
County	ALBERTA
Province	AB
Postal Code	T5H 3S8

Amenities

Amenities	Air Conditioner, Closet Organizers, Deck, Exercise Room, No Animal Home, No Smoking Home, Parking-Visitor, Party Room, Recreation Room/Centre, Secured Parking, Security Door, Social Rooms, Storage-In-Suite, Vinyl Windows
Parking	Heated, Stall, Underground

Interior

Interior Features	ensuite bathroom
Appliances	Dishwasher-Built-In, Dryer, Oven-Microwave, Refrigerator, Stove-Electric, Washer
Heating	Heat Pump, Natural Gas
Fireplace	Yes
Fireplaces	Mantel
# of Stories	22
Stories	1
Has Basement	Yes
Basement	None, No Basement

Exterior

Exterior	Concrete, Brick
Exterior Features	Gated Community, Landscaped, Low Maintenance Landscape, River Valley View, River View, Schools, View City, View Downtown
Roof	Metal
Construction	Concrete, Brick
Foundation	Concrete Perimeter

School Information

Elementary	Norwood/St.Alphonsus
Middle	Spruce Avenue/St.Alphonsus
High	Victoria/ St. Joseph

Additional Information

Date Listed	December 17th, 2024
Days on Market	115
Zoning	Zone 13
Condo Fee	\$966

DATA IS DEEMED RELIABLE BUT IS NOT GUARANTEED ACCURATE BY THE REALTORS® ASSOCIATION OF EDMONTON. COPYRIGHT 2025 BY THE REALTORS® ASSOCIATION OF EDMONTON. ALL RIGHTS RESERVED. Trademarks are owned or controlled by the Canadian Real Estate Association (CREA) and identify real estate professionals who are members of CREA (REALTOR®, REALTORS®) and/or the quality of services they provide (MLS®, Multiple Listing Service®)

Listing information last updated on April 11th, 2025 at 6:47am MDT