

Courtesy Of Adam Kulak Of RE/MAX River City

# \$1,020,000 - 4204 Park West, Stony Plain

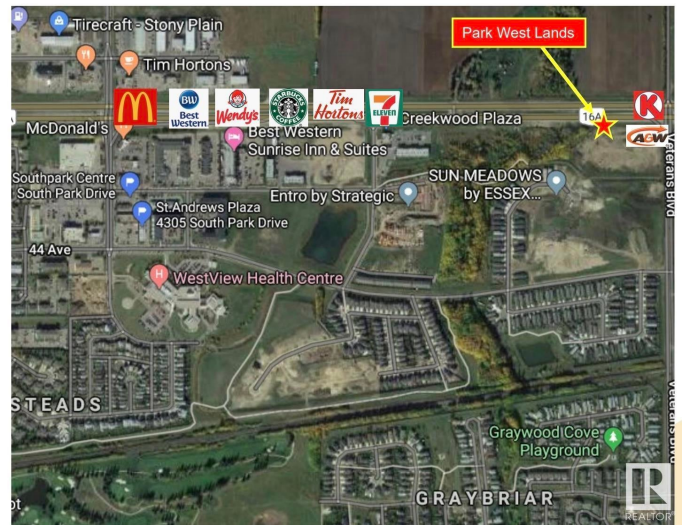
MLS® #E4417153

**\$1,020,000**

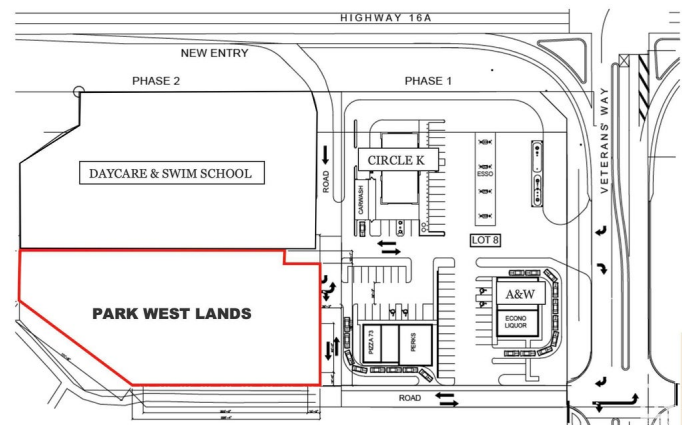
0 Bedroom, 0.00 Bathroom,  
Land Commercial on 0.00 Acres

Sun Meadows, Stony Plain, AB

New prime development land available in Park West Crossing! On the SW corner of Veterans Boulevard and Highway 16A in Stony Plain! With national retailers such as A&W, Circle K, Esso, and Pizza 73, this is a prime development opportunity! Park West provides a can't miss location for commercial investors, being just off Highway 16A with traffic of over 29,000 vehicles per day. This includes vehicles of local Stony Plain residents, as well as traffic coming from Spruce Grove and Edmonton! This also provides opportunity if your looking for Multi-Unit residential development being close to restaurants, a daycare, a swim school, and other convenient amenities, increasing the attractiveness of the area.



**For Sale or will Build to Suit**



Built in 2025

## Essential Information

MLS® #	E4417153
Price	\$1,020,000
Bathrooms	0.00
Acres	0.00
Year Built	2025
Type	Land Commercial
Status	Active

## Community Information

Address	4204 Park West
Area	Stony Plain
Subdivision	Sun Meadows
City	Stony Plain
County	ALBERTA
Province	AB
Postal Code	T7Z 0N1

### **Exterior**

Exterior	See Remarks
Construction	See Remarks

### **Additional Information**

Date Listed	January 6th, 2025
Days on Market	88
Zoning	Zone 91

DATA IS DEEMED RELIABLE BUT IS NOT GUARANTEED ACCURATE BY THE REALTORS® ASSOCIATION OF EDMONTON. COPYRIGHT 2025 BY THE REALTORS® ASSOCIATION OF EDMONTON. ALL RIGHTS RESERVED. Trademarks are owned or controlled by the Canadian Real Estate Association (CREA) and identify real estate professionals who are members of CREA (REALTOR®, REALTORS®) and/or the quality of services they provide (MLS®, Multiple Listing Service®)

Listing information last updated on April 4th, 2025 at 3:32pm MDT