

Courtesy Of Jeff D Jackson Of Bode

\$569,900 - 7304 182 Avenue, Edmonton

MLS® #E4420344

\$569,900

3 Bedroom, 2.50 Bathroom, 2,059 sqft

Single Family on 0.00 Acres

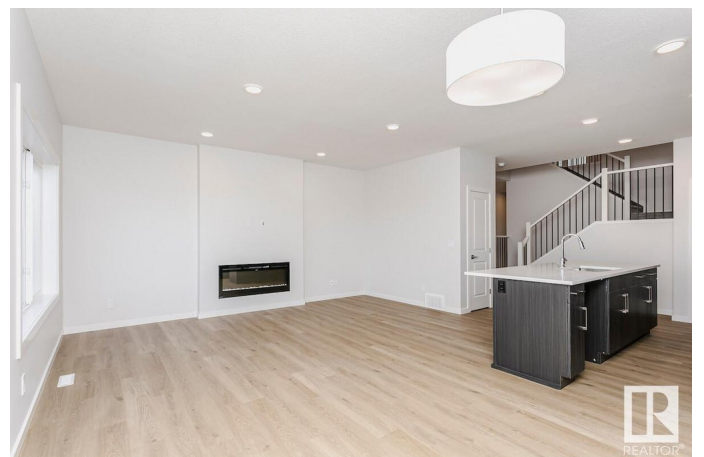
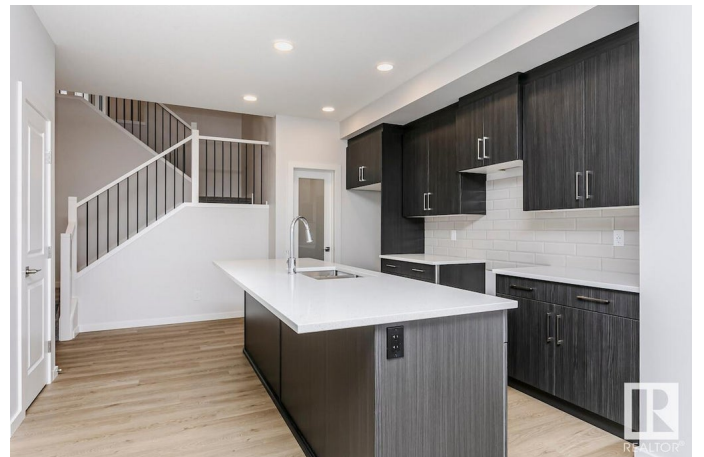
Crystallina Nera East, Edmonton, AB

Welcome to the Rylee K model by Bedrock Homes—a modern 3-bedroom, 2.5-bathroom front drive home offering ~2000 sq ft of stylish, functional space in the desirable Crystallina community. This thoughtfully designed home features an open-concept main floor with a cozy 50" LED electric fireplace, luxury vinyl plank flooring, and a gourmet kitchen with 41" upper cabinets, quartz countertops, and a premium Samsung stainless steel appliance package. Upstairs, discover a central bonus room, second-floor laundry, and a primary bedroom with dual sinks in the ensuite. Built for convenience, this smart home includes a Smart Home Hub, EcoBee thermostat, video doorbell, and Weiser Wi-Fi smart keyless lock. With a double attached garage, this move-in-ready home is perfect for families looking for a blend of comfort and cutting-edge technology in a great neighborhood with easy access to amenities.

Built in 2024

Essential Information

| | |
|------------|-----------|
| MLS® # | E4420344 |
| Price | \$569,900 |
| Bedrooms | 3 |
| Bathrooms | 2.50 |
| Full Baths | 2 |



| | |
|----------------|------------------------|
| Half Baths | 1 |
| Square Footage | 2,059 |
| Acres | 0.00 |
| Year Built | 2024 |
| Type | Single Family |
| Sub-Type | Detached Single Family |
| Style | 2 Storey |
| Status | Active |

Community Information

| | |
|-------------|-----------------------|
| Address | 7304 182 Avenue |
| Area | Edmonton |
| Subdivision | Crystallina Nera East |
| City | Edmonton |
| County | ALBERTA |
| Province | AB |
| Postal Code | T5Z 0J1 |

Amenities

| | |
|----------------|------------------------|
| Amenities | See Remarks |
| Parking Spaces | 4 |
| Parking | Double Garage Attached |

Interior

| | |
|-------------------|---|
| Interior Features | ensuite bathroom |
| Appliances | Dishwasher-Built-In, Microwave Hood Fan, Refrigerator, Stove-Electric |
| Heating | Forced Air-1, Natural Gas |
| Fireplace | Yes |
| Fireplaces | Insert |
| Stories | 2 |
| Has Basement | Yes |
| Basement | Full, Unfinished |

Exterior

| | |
|-------------------|--|
| Exterior | Wood, Fiber Cement, Stone, Vinyl |
| Exterior Features | Park/Reserve, Schools, Shopping Nearby |
| Roof | Asphalt Shingles |
| Construction | Wood, Fiber Cement, Stone, Vinyl |
| Foundation | Concrete Perimeter |

Additional Information

Date Listed February 4th, 2025

Days on Market 38

Zoning Zone 28

DATA IS DEEMED RELIABLE BUT IS NOT GUARANTEED ACCURATE BY THE REALTORS® ASSOCIATION OF EDMONTON. COPYRIGHT 2025 BY THE REALTORS® ASSOCIATION OF EDMONTON. ALL RIGHTS RESERVED. Trademarks are owned or controlled by the Canadian Real Estate Association (CREA) and identify real estate professionals who are members of CREA (REALTOR®, REALTORS®) and/or the quality of services they provide (MLS®, Multiple Listing Service®)

Listing information last updated on March 14th, 2025 at 6:17am MDT