

\$190,000 - 4 150 Edwards Drive, Edmonton

MLS® #E4420687

\$190,000

2 Bedroom, 1.00 Bathroom, 727 sqft
Condo / Townhouse on 0.00 Acres

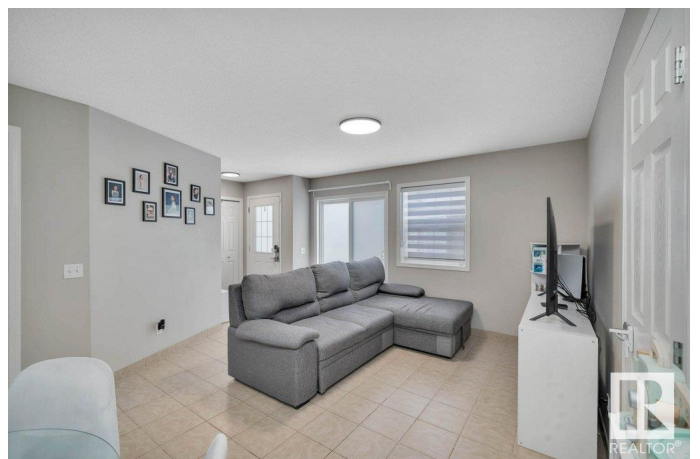
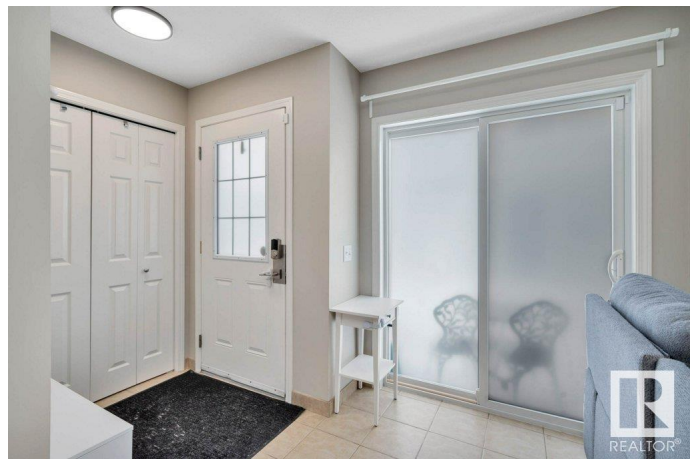
Ellerslie, Edmonton, AB

Attention first-time homebuyers and investors! This charming 2-bedroom, 1-bathroom carriage-style condo in the desirable Ellerslie neighborhood is a must see. Recently upgraded in 2024, this home features all new appliances (fridge, stove, built-in dishwasher, washer, dryer), zebra window coverings, a new tub and tile surround, updated lighting and plumbing fixtures, plus freshly painted walls, trim, and doors. The open concept design boasts in-floor heating & stylish tile floors throughout. Enjoy the convenience of a walk-in closet in the primary bedroom. Situated just minutes from South Edmonton Common and offering easy access to Anthony Henday Drive & QE2, this condo is the perfect blend of comfort and location. If that was not enough the condo fees also cover your heat, water and sewer. Don't miss out on this 10/10 property!

Built in 2005

Essential Information

MLS® #	E4420687
Price	\$190,000
Bedrooms	2
Bathrooms	1.00
Full Baths	1
Square Footage	727



Acres	0.00
Year Built	2005
Type	Condo / Townhouse
Sub-Type	Carriage
Style	Bungalow
Status	Active

Community Information

Address	4 150 Edwards Drive
Area	Edmonton
Subdivision	Ellerslie
City	Edmonton
County	ALBERTA
Province	AB
Postal Code	T6X 1M4

Amenities

Amenities	Parking-Visitor, Storage-In-Suite, Vinyl Windows
Parking	Stall

Interior

Appliances	Dishwasher-Built-In, Hood Fan, Refrigerator, Stacked Washer/Dryer, Stove-Electric, Window Coverings
Heating	In Floor Heat System, Natural Gas
Stories	1
Has Basement	Yes
Basement	None, No Basement

Exterior

Exterior	Wood, Stone, Vinyl
Exterior Features	Airport Nearby, Golf Nearby, Landscaped, Playground Nearby, Public Transportation, Schools, Shopping Nearby
Roof	Unknown
Construction	Wood, Stone, Vinyl
Foundation	Slab

Additional Information

Date Listed	February 7th, 2025
Days on Market	57

Zoning	Zone 53
Condo Fee	\$399

DATA IS DEEMED RELIABLE BUT IS NOT GUARANTEED ACCURATE BY THE REALTORS® ASSOCIATION OF EDMONTON. COPYRIGHT 2025 BY THE REALTORS® ASSOCIATION OF EDMONTON. ALL RIGHTS RESERVED. Trademarks are owned or controlled by the Canadian Real Estate Association (CREA) and identify real estate professionals who are members of CREA (REALTOR®, REALTORS®) and/or the quality of services they provide (MLS®, Multiple Listing Service®)

Listing information last updated on April 5th, 2025 at 2:02am MDT