

Courtesy Of Eddie J Castillo Of Exp Realty

# \$289,900 - 1307 10388 105 Street, Edmonton

MLS® #E4426234

**\$289,900**

2 Bedroom, 2.00 Bathroom, 781 sqft  
Condo / Townhouse on 0.00 Acres

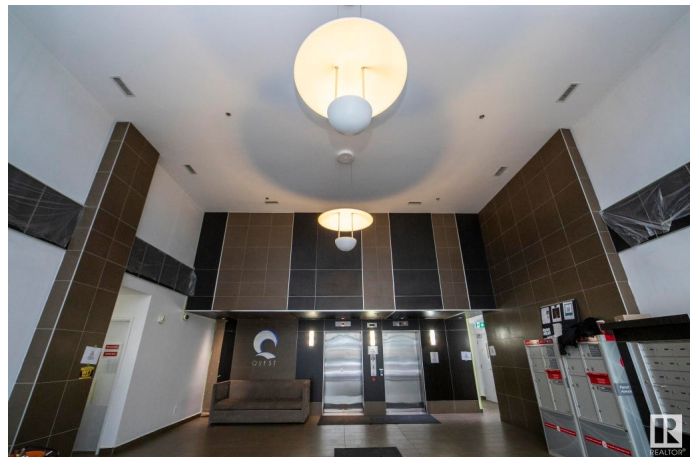
Downtown (Edmonton), Edmonton, AB

Welcome to the highly desired Quest building. This 13th floor 2 bed, 2 bath CORNER UNIT with heated underground parking has an unbeatable location directly across the street from Macewan University and Rogers Place and Ice District, offering you world class dining and shopping and amenities at your fingertips. This impeccable 13th floor corner unit has a great ultra modern stye and affords breathtaking views of our city. This unit is fully loaded with BRAND NEW VINYL PLANK flooring and high end steel appliances and granite countertops throughout. Welcome home to the Quest and be a part yeg's vibrant downtown and be in the heart of it all.

Built in 2009

## Essential Information

MLS® #	E4426234
Price	\$289,900
Bedrooms	2
Bathrooms	2.00
Full Baths	2
Square Footage	781
Acres	0.00
Year Built	2009
Type	Condo / Townhouse
Sub-Type	Apartment High Rise



Style Single Level Apartment  
Status Active

### Community Information

Address 1307 10388 105 Street  
Area Edmonton  
Subdivision Downtown (Edmonton)  
City Edmonton  
County ALBERTA  
Province AB  
Postal Code T5J 0C2

### Amenities

Amenities Air Conditioner, Deck, No Animal Home, No Smoking Home, Parking-Visitor, Storage-In-Suite  
Parking Heated, Underground

### Interior

Interior Features ensuite bathroom  
Appliances Air Conditioning-Central, Dishwasher-Built-In, Hood Fan, Oven-Built-In, Oven-Microwave, Refrigerator, Stacked Washer/Dryer, Stove-Countertop Electric  
Heating Baseboard, Natural Gas  
# of Stories 23  
Stories 1  
Has Basement Yes  
Basement None, No Basement

### Exterior

Exterior Concrete, Brick  
Exterior Features Corner Lot, Low Maintenance Landscape, Playground Nearby, Public Swimming Pool, Public Transportation, Schools, Shopping Nearby, View City, View Downtown  
Roof EPDM Membrane  
Construction Concrete, Brick  
Foundation Concrete Perimeter

### Additional Information

Date Listed March 18th, 2025  
Days on Market 25

Zoning	Zone 12
Condo Fee	\$610

DATA IS DEEMED RELIABLE BUT IS NOT GUARANTEED ACCURATE BY THE REALTORS® ASSOCIATION OF EDMONTON. COPYRIGHT 2025 BY THE REALTORS® ASSOCIATION OF EDMONTON. ALL RIGHTS RESERVED. Trademarks are owned or controlled by the Canadian Real Estate Association (CREA) and identify real estate professionals who are members of CREA (REALTOR®, REALTORS®) and/or the quality of services they provide (MLS®, Multiple Listing Service®)

Listing information last updated on April 12th, 2025 at 9:32am MDT