

\$389,998 - 2039 210 Street, Edmonton

MLS® #E4427066

\$389,998

2 Bedroom, 2.00 Bathroom, 922 sqft

Single Family on 0.00 Acres

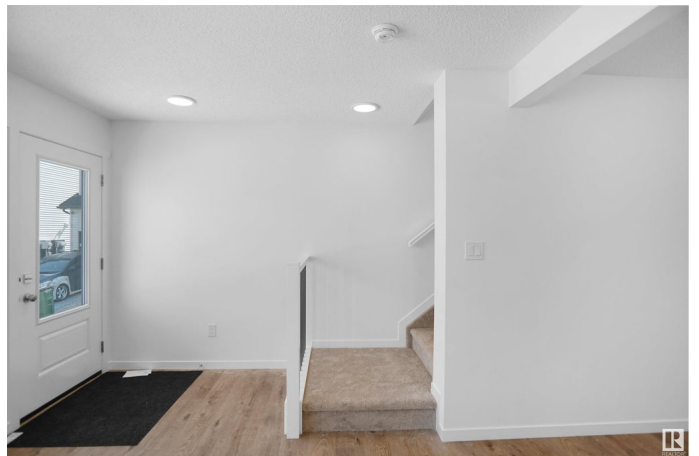
Stillwater, Edmonton, AB

welcome to the all new "Willow RPL" Built by StreetSide Developments and is located in one of West Edmonton's newest premier communities of the Uplands at Riverview. With almost 925 Square Feet it comes with a over sized parking pad, this opportunity is perfect for a young family or young couple. Your main floor is complete with upgrade luxury Vinyl Plank flooring throughout the great room and the kitchen. The main floor open concept has a beautiful open plan with a kitchen that has upgraded cabinets, upgraded counter tops and a tile back splash. The upper level has 2 bedrooms and 2 full bathrooms. This single family home also comes with a unspoiled basement and a side separate entrance perfect for future development. *** Home is under construction and will be complete by this coming Fall or late summer, photos used are from the same model home recently built but the colors and finishings may vary ***

Built in 2025

Essential Information

MLS® #	E4427066
Price	\$389,998
Bedrooms	2
Bathrooms	2.00



Full Baths	2
Square Footage	922
Acres	0.00
Year Built	2025
Type	Single Family
Sub-Type	Detached Single Family
Style	2 Storey
Status	Active

Community Information

Address	2039 210 Street
Area	Edmonton
Subdivision	Stillwater
City	Edmonton
County	ALBERTA
Province	AB
Postal Code	T6M 3H6

Amenities

Amenities	See Remarks
Parking Spaces	2
Parking	Parking Pad Cement/Paved

Interior

Interior Features	ensuite bathroom
Appliances	See Remarks
Heating	Forced Air-1, Natural Gas
Stories	2
Has Basement	Yes
Basement	Full, Unfinished

Exterior

Exterior	Wood, Vinyl
Exterior Features	Airport Nearby, Golf Nearby, Park/Reserve, Playground Nearby, Public Transportation, Schools, Shopping Nearby, See Remarks
Roof	Asphalt Shingles
Construction	Wood, Vinyl
Foundation	Concrete Perimeter

Additional Information

Date Listed March 21st, 2025

Days on Market 14

Zoning Zone 57

DATA IS DEEMED RELIABLE BUT IS NOT GUARANTEED ACCURATE BY THE REALTORS® ASSOCIATION OF EDMONTON. COPYRIGHT 2025 BY THE REALTORS® ASSOCIATION OF EDMONTON. ALL RIGHTS RESERVED. Trademarks are owned or controlled by the Canadian Real Estate Association (CREA) and identify real estate professionals who are members of CREA (REALTOR®, REALTORS®) and/or the quality of services they provide (MLS®, Multiple Listing Service®)

Listing information last updated on April 4th, 2025 at 1:32pm MDT