

Courtesy Of Bryan S Mundo Of Century 21 Masters

## **\$450,000 - 342 Southfork Drive, Leduc**

MLS® #E4428097

### **\$450,000**

3 Bedroom, 3.50 Bathroom, 1,518 sqft  
Single Family on 0.00 Acres

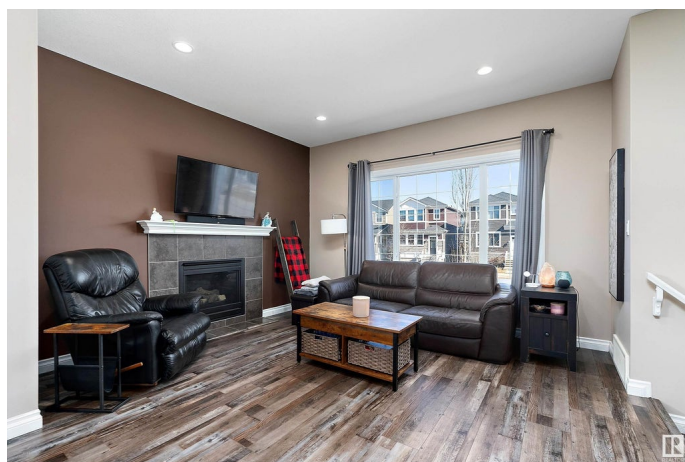
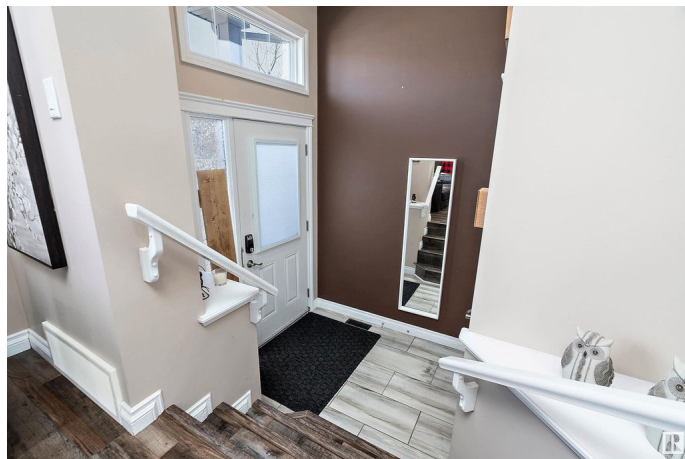
Southfork, Leduc, AB

The Red House!! Discover this stunning 1,517 sq. ft. 2-Storey home located in the highly sought-after family-friendly community of South Fork, Leduc. This 3-bedroom, 3.5-bath property includes a newly finished basement and an oversized double detached garage. The open-concept main floor features soaring 9-ft ceilings, upgraded vinyl plank flooring, a cozy gas fireplace, and a kitchen with ample cabinetry stainless steel appliances, a center island, and pantry. Upstairs, enjoy convenience of a second-floor laundry and 3 very spacious bedrooms. This home is energy-efficient with plenty of vinyl windows, heat recovery ventilator, and a high-efficiency furnace. Outside, relax on your deck in the sunny, south-facing landscaped backyard. Close to schools, parks, playgrounds, public transit, and shopping amenities, this home offers the perfect blend of comfort and convenience. Donâ€™t miss this opportunity to call this home yours!

Built in 2012

### **Essential Information**

MLS® #	E4428097
Price	\$450,000
Bedrooms	3
Bathrooms	3.50



Full Baths	3
Half Baths	1
Square Footage	1,518
Acres	0.00
Year Built	2012
Type	Single Family
Sub-Type	Detached Single Family
Style	2 Storey
Status	Active

### Community Information

Address	342 Southfork Drive
Area	Leduc
Subdivision	Southfork
City	Leduc
County	ALBERTA
Province	AB
Postal Code	T9E 0T8

### Amenities

Amenities	Deck, Vinyl Windows
Parking	Double Garage Detached

### Interior

Interior Features	ensuite bathroom
Appliances	Dishwasher-Built-In, Dryer, Oven-Microwave, Refrigerator, Stove-Electric, Washer, Window Coverings
Heating	Forced Air-1, Natural Gas
Fireplace	Yes
Fireplaces	Tile Surround
Stories	3
Has Basement	Yes
Basement	Full, Finished

### Exterior

Exterior	Wood, Stone, Vinyl
Exterior Features	Airport Nearby, Fenced, Golf Nearby, Landscaped, Playground Nearby, Public Transportation, Schools, Shopping Nearby
Roof	Asphalt Shingles

Construction Wood, Stone, Vinyl  
Foundation Concrete Perimeter

### **Additional Information**

Date Listed March 28th, 2025  
Days on Market 6  
Zoning Zone 81

DATA IS DEEMED RELIABLE BUT IS NOT GUARANTEED ACCURATE BY THE REALTORS® ASSOCIATION OF EDMONTON. COPYRIGHT 2025 BY THE REALTORS® ASSOCIATION OF EDMONTON. ALL RIGHTS RESERVED. Trademarks are owned or controlled by the Canadian Real Estate Association (CREA) and identify real estate professionals who are members of CREA (REALTOR®, REALTORS®) and/or the quality of services they provide (MLS®, Multiple Listing Service®)

Listing information last updated on April 3rd, 2025 at 12:47pm MDT