

Courtesy Of Kamran Amjad Of MaxWell Progressive

\$240,000 - 116 1204 156 Street, Edmonton

MLS® #E4428400

\$240,000

2 Bedroom, 2.00 Bathroom, 1,174 sqft
Condo / Townhouse on 0.00 Acres

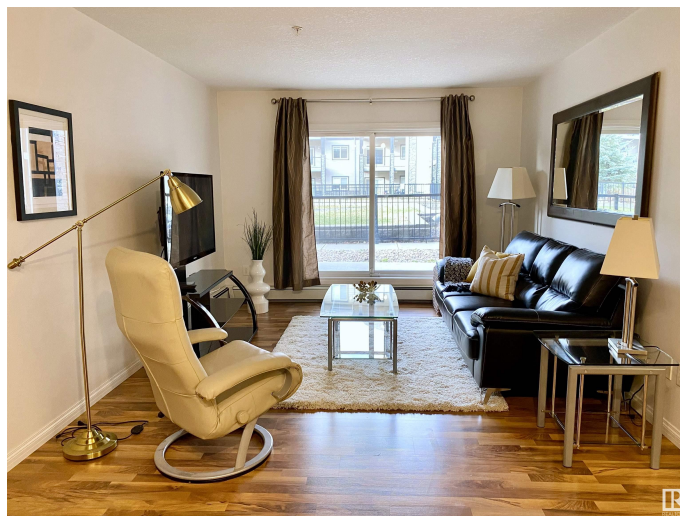
South Terwillegar, Edmonton, AB

Welcome to Ospin Terrace, one of the most sought-after condo developments in South Terwillegar! This large main floor unit offers 2 bedrooms, a versatile den, and 2 bathrooms, providing plenty of space for work or relaxation. The open-concept living area is designed for comfort and convenience, while the functional kitchen is perfect for cooking and entertaining. Enjoy the ease of in-suite laundry and storage, plus a balcony to enjoy the fresh air. This unit comes with one assigned heated, underground parking stall for added convenience. The building also features a gym and a social room. Ideally located close to shopping, schools, restaurants, and more! Great for first-time homebuyers or a fantastic rental investment!

Built in 2007

Essential Information

MLS® #	E4428400
Price	\$240,000
Bedrooms	2
Bathrooms	2.00
Full Baths	2
Square Footage	1,174
Acres	0.00
Year Built	2007



Type	Condo / Townhouse
Sub-Type	Lowrise Apartment
Style	Single Level Apartment
Status	Active

Community Information

Address	116 1204 156 Street
Area	Edmonton
Subdivision	South Terwillegar
City	Edmonton
County	ALBERTA
Province	AB
Postal Code	T6R 0R6

Amenities

Amenities	Recreation Room/Centre, Vinyl Windows, See Remarks
Parking Spaces	1
Parking	Heated, Underground

Interior

Interior Features	ensuite bathroom
Appliances	Dishwasher-Built-In, Dryer, Microwave Hood Fan, Refrigerator, Stove-Electric, Washer, Window Coverings
Heating	Baseboard, Natural Gas
# of Stories	4
Stories	4
Has Basement	Yes
Basement	See Remarks, No Basement

Exterior

Exterior	Wood, Vinyl
Exterior Features	Flat Site, Landscaped, Playground Nearby, Public Swimming Pool, Public Transportation, Schools, Shopping Nearby
Roof	Asphalt Shingles
Construction	Wood, Vinyl
Foundation	Concrete Perimeter

School Information

Elementary	Esther Starkman School
------------	------------------------

Middle	Esther Starkman School
High	Lillian Osborne School

Additional Information

Date Listed April 1st, 2025

Days on Market 3

Zoning Zone 14

Condo Fee \$719

DATA IS DEEMED RELIABLE BUT IS NOT GUARANTEED ACCURATE BY THE REALTORS® ASSOCIATION OF EDMONTON. COPYRIGHT 2025 BY THE REALTORS® ASSOCIATION OF EDMONTON. ALL RIGHTS RESERVED. Trademarks are owned or controlled by the Canadian Real Estate Association (CREA) and identify real estate professionals who are members of CREA (REALTOR®, REALTORS®) and/or the quality of services they provide (MLS®, Multiple Listing Service®)

Listing information last updated on April 4th, 2025 at 5:32am MDT