

# \$299,000 - 1106 10410 102 Avenue, Edmonton

MLS® #E4428635

**\$299,000**

2 Bedroom, 2.00 Bathroom, 840 sqft  
Condo / Townhouse on 0.00 Acres

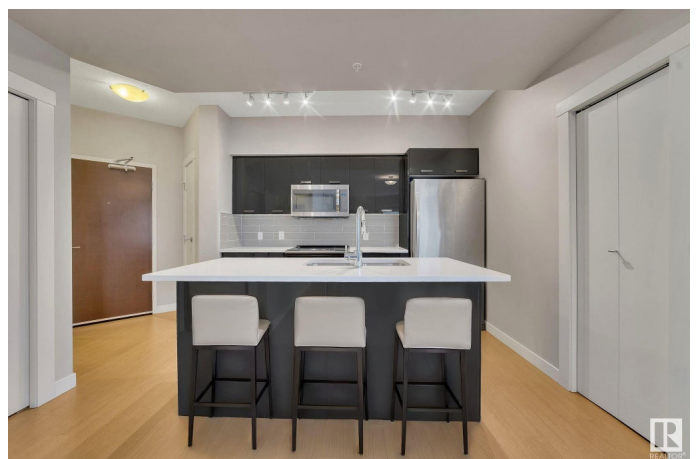
Downtown (Edmonton), Edmonton, AB

Fox Two encapsulates the spirit of city living, offering a dynamic lifestyle within walking distance of entertainment, dining, and cultural hotspots. Whether immersing yourself in the energy of the Ice District or exploring the Brewery District, this condo is your urban sanctuary and perfect for any city dweller! This sleek residence features modern kitchen which showcases stainless appliances and stylish finishes which are sure to impress chefs of all skill levels! The bedrooms provide a well-lit retreat and plenty of closet space while the bathrooms boast sleek fixtures for a touch of opulence. Added comforts include AC, in-suite laundry and an underground parking stall. Unparalleled convenience awaits you in the Fox Two! SOME PHOTOS ARE VIRTUALLY STAGED.

Built in 2017

## Essential Information

MLS® #	E4428635
Price	\$299,000
Bedrooms	2
Bathrooms	2.00
Full Baths	2
Square Footage	840
Acres	0.00
Year Built	2017



Type	Condo / Townhouse
Sub-Type	Apartment High Rise
Style	Single Level Apartment
Status	Active

### Community Information

Address	1106 10410 102 Avenue
Area	Edmonton
Subdivision	Downtown (Edmonton)
City	Edmonton
County	ALBERTA
Province	AB
Postal Code	T5J 0E9

### Amenities

Amenities	Air Conditioner, Detectors Smoke, Secured Parking
Parking Spaces	1
Parking	Underground

### Interior

Interior Features	ensuite bathroom
Appliances	Air Conditioning-Central, Dishwasher-Built-In, Refrigerator, Stacked Washer/Dryer, Stove-Electric
Heating	Baseboard, Water
# of Stories	33
Stories	1
Has Basement	Yes
Basement	None, No Basement

### Exterior

Exterior	Concrete, Brick, Stucco
Exterior Features	Back Lane, Golf Nearby, Playground Nearby, Public Transportation, Schools, Shopping Nearby, View City, See Remarks
Roof	EPDM Membrane
Construction	Concrete, Brick, Stucco
Foundation	Concrete Perimeter

### Additional Information

Date Listed	April 2nd, 2025
-------------	-----------------

Days on Market	2
Zoning	Zone 12
Condo Fee	\$485

DATA IS DEEMED RELIABLE BUT IS NOT GUARANTEED ACCURATE BY THE REALTORS® ASSOCIATION OF EDMONTON. COPYRIGHT 2025 BY THE REALTORS® ASSOCIATION OF EDMONTON. ALL RIGHTS RESERVED. Trademarks are owned or controlled by the Canadian Real Estate Association (CREA) and identify real estate professionals who are members of CREA (REALTOR®, REALTORS®) and/or the quality of services they provide (MLS®, Multiple Listing Service®)

Listing information last updated on April 4th, 2025 at 6:47am MDT