

\$584,900 - 4211 Charles Close, Edmonton

MLS® #E4428638

\$584,900

3 Bedroom, 3.00 Bathroom, 1,929 sqft
Single Family on 0.00 Acres

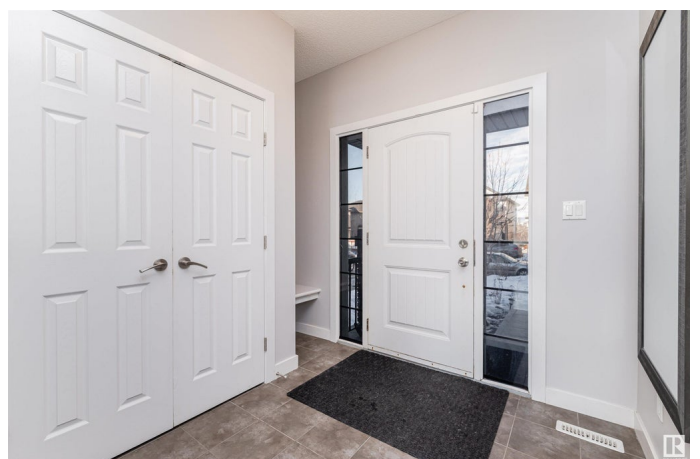
Chappelle Area, Edmonton, AB

Welcome to this stunning 2400 + sqft with FULLY FINISHED BASEMENT, Landmark-built home in Chappelle, SW Edmonton! Nestled on a quiet street, it features 3 spacious bedrooms, 2.5 baths, a bonus room, and a double attached garage. The bright living room flows into an open-concept kitchen with a large island & stainless steel appliances. The dining area opens to a Sun-Filled SOUTH-FACING BACKYARD with a beautiful deck and scenic walking path access, perfect for relaxation and outdoor gatherings. Upstairs, the primary suite boasts a luxurious ensuite with double sinks vanities, plus 2 additional bedrooms, a big bonus room, and a 4-pc bath. The high-end finished basement offers a stylish entertainment area, office space, and a 2-pc bath with extra washer hookup. Recent upgrades include Hardwood flooring and fresh paint. With a prime location close to schools, shopping, parks, and all amenities, plus quick access to the Henday! A 10/10 showing!

Built in 2012

Essential Information

MLS® #	E4428638
Price	\$584,900
Bedrooms	3



Bathrooms	3.00
Full Baths	2
Half Baths	2
Square Footage	1,929
Acres	0.00
Year Built	2012
Type	Single Family
Sub-Type	Detached Single Family
Style	2 Storey
Status	Active

Community Information

Address	4211 Charles Close
Area	Edmonton
Subdivision	Chappelle Area
City	Edmonton
County	ALBERTA
Province	AB
Postal Code	T6W 0Z5

Amenities

Amenities	Deck, No Animal Home, No Smoking Home
Parking	Double Garage Attached

Interior

Interior Features	ensuite bathroom
Appliances	Dishwasher-Built-In, Dryer, Garage Opener, Hood Fan, Refrigerator, Stove-Gas, Washer, Window Coverings
Heating	Forced Air-1, Natural Gas
Stories	3
Has Basement	Yes
Basement	Full, Finished

Exterior

Exterior	Wood, Vinyl
Exterior Features	Fenced, Landscaped, Playground Nearby, Public Transportation, Schools, Shopping Nearby, See Remarks
Roof	Asphalt Shingles
Construction	Wood, Vinyl

Foundation Concrete Perimeter

Additional Information

Date Listed April 2nd, 2025

Days on Market 10

Zoning Zone 55

HOA Fees 105

HOA Fees Freq. Annually

DATA IS DEEMED RELIABLE BUT IS NOT GUARANTEED ACCURATE BY THE REALTORS® ASSOCIATION OF EDMONTON. COPYRIGHT 2025 BY THE REALTORS® ASSOCIATION OF EDMONTON. ALL RIGHTS RESERVED. Trademarks are owned or controlled by the Canadian Real Estate Association (CREA) and identify real estate professionals who are members of CREA (REALTOR®, REALTORS®) and/or the quality of services they provide (MLS®, Multiple Listing Service®)

Listing information last updated on April 12th, 2025 at 7:47am MDT